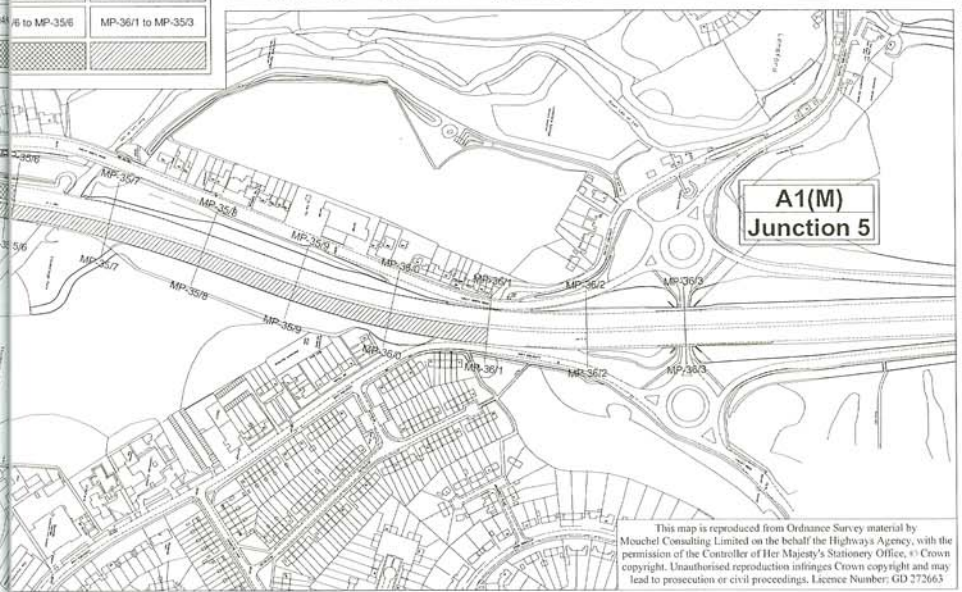
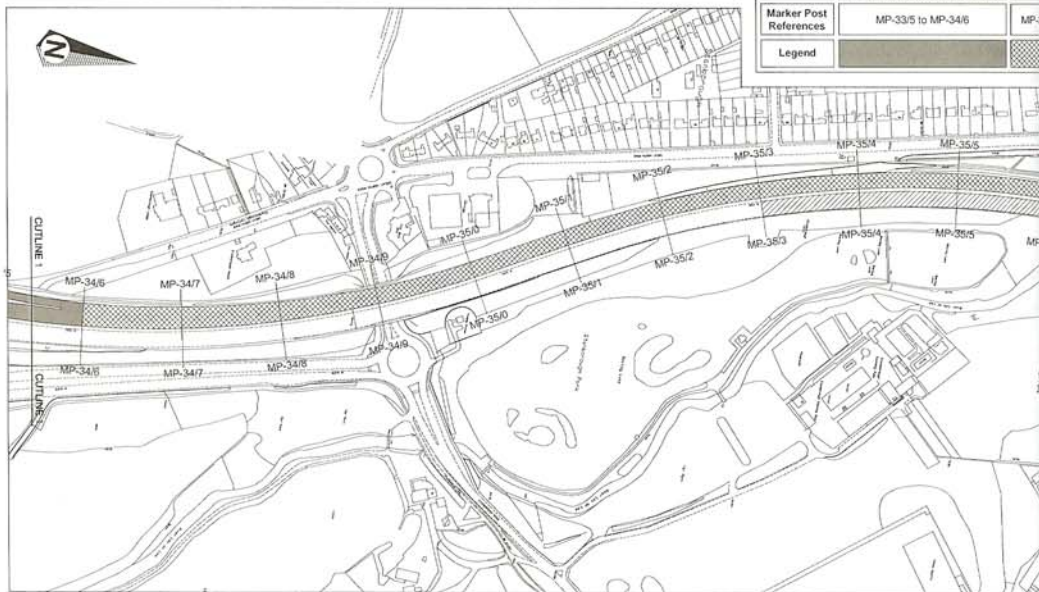


Legend		
Job Title	A1(M) - Junction 4 Northbound exit and entry slips (including mini roundabout at top of Junction 4)	A1(M) - Junction 4 to Junction 5 Northbound
Marker Post References	MP-33/5 to MP-34/6	MP-34/6 to MP-35/6
Legend		
		A1(M) - Junction 5 to Junction 4 Southbound
		MP-36/1 to MP-35/3



This map is reproduced from Ordnance Survey material by Mouchel Consulting Limited on the behalf the Highways Agency, with the permission of the Controller of Her Majesty's Stationery Office, © Crown copyright. Unauthorised reproduction infringes Crown copyright and may lead to prosecution or civil proceedings. Licence Number: GD 272663

B01 ISSUED FOR INFORMATION
 REV DESCRIPTION
 CLIENT

T.M-08-05
 SIG/DATE

PROJECT
**A1(M) - JUNCTION 5 TO 4
 RESURFACING INCLUDING
 ENTRY AND EXIT SLIPROADS**

TITLE
**LOCATION OF A1(M)
 RESURFACING SCHEMES
 (PLANNED WORKS FOR
 2006 / 2007)**

DRAWN:	T.M	AUGUST 2005
DESIGN:	C.N	AUGUST 2005
CHECKED:	V.M	AUGUST 2005
APPROVED:	S.H	AUGUST 2005
SCALE:	1:5000	A3
CAD REF:	710016-001-SCH-001	

AGENT

mouchelparkman

DRAWING No: **710016-001-SCH-001**

REV: **B01**